



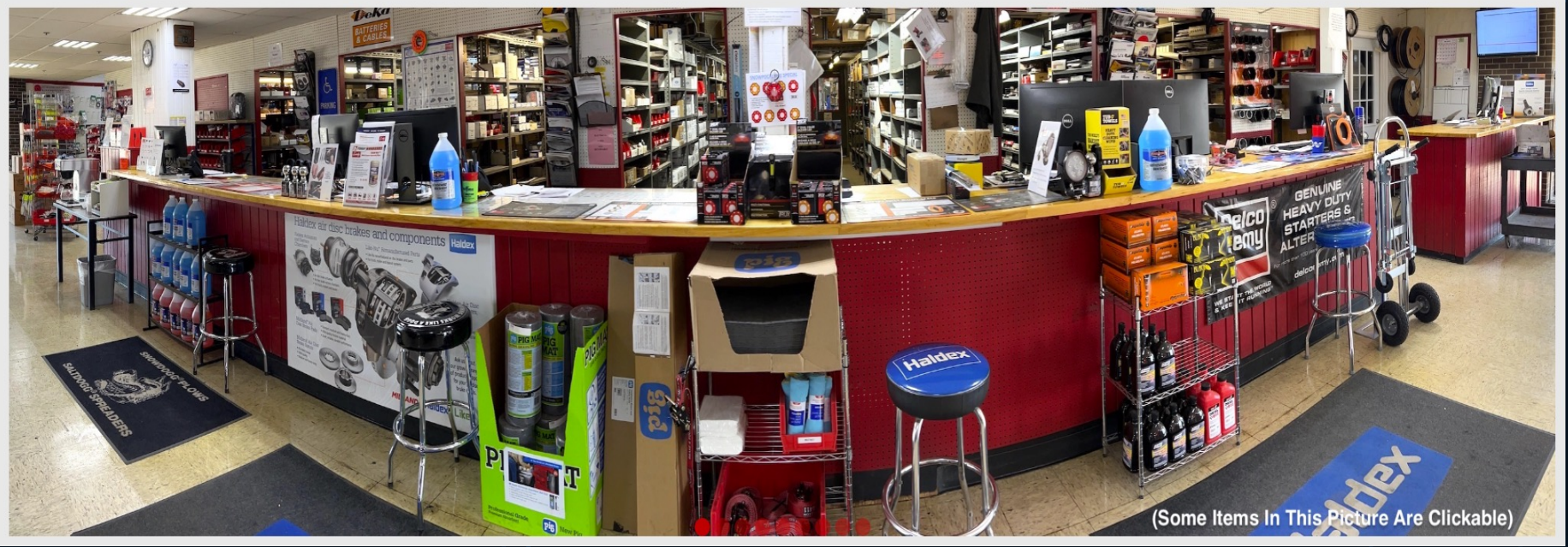
Search by Part No, Product Type, Product Line, Keyword, Interchange, Product Description



Saginaw - 989.755.4411 Cust. No. 04054

SHOP BY BRAND

NA | EN | Hi Brian | My Account | Order Pad | Cart



Scientific Brake & Equipment - Parts Store

<https://partsstore.scientificbrake.com/>

Benefits of using Parts Store:

- Real time inventory in all Scientific locations with quantity available
- Current pricing
- Search for parts by part number, interchange, brand, or category
- Review previous invoices and check status of order
- Save time by placing an order with just a few clicks
- Create saved, editable, parts lists to easily add to your cart
- Easy check out by using purchase order # or credit card
- All invoices can be emailed at the time of purchase

<https://partsstore.scientificbrake.com/>




Quick Order Pad

Order Pad

Part No.	Quantity	
110410	3	⊗
15208	1	⊗
330-3019	10	⊗
392-913		
392-9131 Drive Wheel Set 3929131 Interchange (STEMCO INC)		
42672 SEAL 392-9130 Interchange (SKF-CHICAGO RAWHIDE)		
43875 DRIVE AXLE/TRACTOR/SCOTSEAL-INCH 392-9131 Interchang		
47690 SCOTSEAL 392-9132 Interchange (SKF-CHICAGO RAWHIDE)		
47697 Seal 392-9131 Interchange (SKF-CHICAGO RAWHIDE)		
370005A OIL SEAL 392-9132 Interchange (FEDERAL MOGUL - NATI		
309-0973 Guardian Hp Seal STEMCO 392-9131 Interchange (STEMC		

OR

Drag & Drop Excel File OR [Click here](#) to import

SAMPLE EXCEL FILE 

OR

Copy & Paste from Excel File

Part No.(Tab/Comma/Pipe)Qty(Tab/Comma/Pipe)*

Examples:

Tab
BALB99 23

Comma
BALB99,23,

Pipe
BALB99|23|

Enter part numbers or interchange. A maximum of 500 parts can be added.

NEXT

- Used to add multiple parts at one time to your cart when you know the part number
- Upload your list using a spreadsheet
- This is a shortcut instead of adding parts through the search features or when you are in your cart

<https://partsstore.scientificbrake.com/>

Shopping Cart



Search by Part No. Product Type, Product Line, Keyword, Interchange, Product Description



Saginaw - 989.755.4411 Cust. No. 04054

SHOP BY BRAND

NA | EN

Hi Brian
My Account

Order Pad

4
Cart

Cart (4)

Add part to cart

Enter Scientific Brake & Equipment Company / Cust. Part No.



Part No./Part Name	Qty.	UOM	Back Order	Unit Price (\$)	Unit Core Deposit (\$)	Tax (\$)	Final Price (\$)	Select To Remove
<input type="text" value="Search by Part No./Part Name"/>								<input type="checkbox"/>
110410 Relay Valve 2 Port (Cust. Part No. 110410)	<input type="text" value="3"/> ✓ 5 Available	EA	0	74.18	0.00	0.00	222.54	<input type="checkbox"/>
15208 15 Series License Lamp 12 Volt (Cust. Part No. 15208)	<input type="text" value="2"/> ✓ 19 Available	EA	0	2.75	0.00	0.00	5.50	<input type="checkbox"/>
392-9131 Drive Wheel Set (Cust. Part No. 392-9131)	<input type="text" value="3"/> ✓ 23 Available	EA	0	50.54	0.00	0.00	151.62	<input type="checkbox"/>
330-3019 HUB CAP GASKET (Cust. Part No. 330-3019)	<input type="text" value="10"/> ●		10	2.15	0.00	0.00	21.50	<input type="checkbox"/>

To edit, cancel, or ask about your account-specific pricing, please email CustomerService@scientificbrake.com or call 1-989-755-4411.

Availability is based on real-time quantities on-hand at time of request. Inventory is not reserved until order is formally placed and received.

Order Summary

No. of Line(s)	4
Total Quantity	18
Sub Total	401.16
Total Tax	0.00
Order Total	\$ 401.16

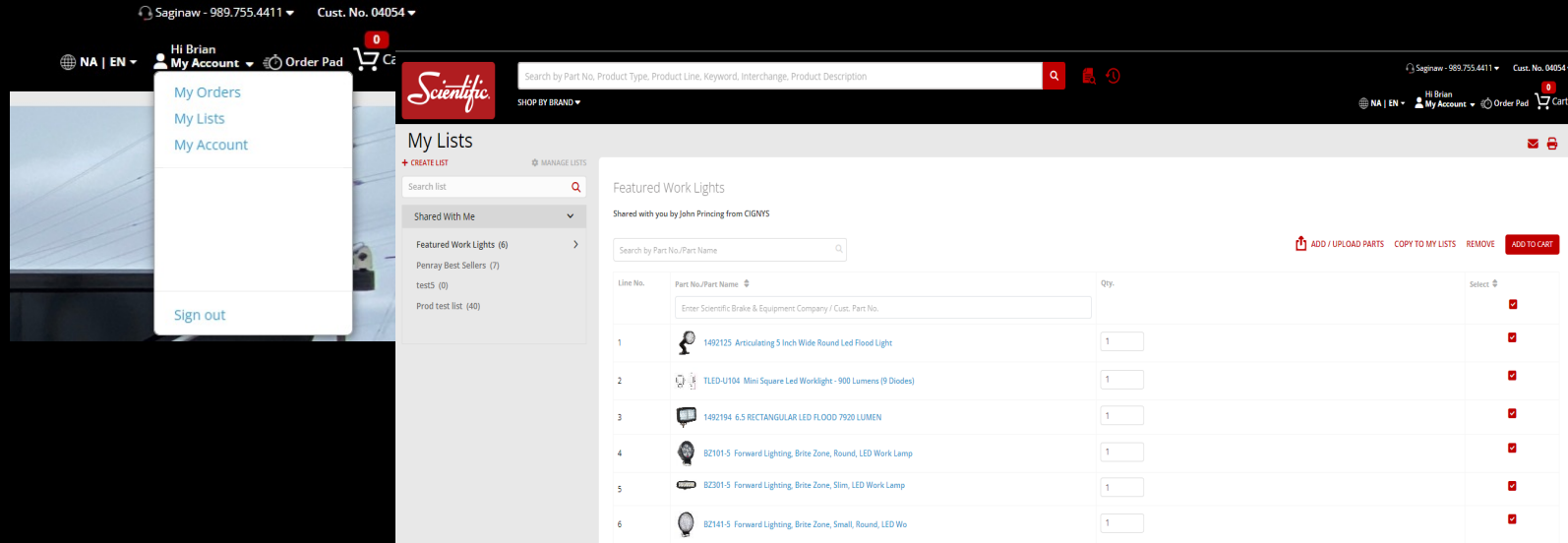
CHECKOUT

CONTINUE SHOPPING

- Shows part number and description
- Shows quantity ordered
- Shows quantity available in your assigned Scientific Branch
- Shows if part will be backorder and quantity

<https://partsstore.scientificbrake.com/>

My List



Access list from
drop down menu
under **My Account**

- ❑ Used to create a saved list of parts you order frequently, or parts to review with sales representative, or parts you use every time you preform a specific task, such as a complete brake job
- ❑ This list can be shared with your Scientific Salesperson or other store location
- ❑ You can remove or add parts to this list before you submit the order

<https://partsstore.scientificbrake.com/>

My Orders

The screenshot displays the 'My Orders' section of the Scientific Brake website. At the top, there is a search bar with the text 'Search by Part No, Product Type, Product Line, Keyword, Interchange, Product Description'. To the right of the search bar are icons for a shopping cart and a refresh button. The user's name 'Hi Brian' and account information are visible in the top right corner, along with a 'Cart' icon showing 0 items. Below the search bar, there are two summary cards: 'Open Orders' with a count of 12 and 'Total Orders' with a count of 13. The main section is titled 'Orders' and shows a list of orders from 03/18/2025 to 04/17/2025. The list includes columns for Order No., Primary PO No., Order Date, and status. Three orders are listed: 100937 (In Process), 100874 (REQUIRED), and 100841 (Invoiced). Each order has 'REORDER' and 'ADD TO LIST' buttons.

Order No.	Primary PO No.	Order Date	Status
100937	24225	04/16/2025	In Process
100874	REQUIRED	04/15/2025	
100841	24215	04/14/2025	Invoiced

View all orders placed by your store including:

- Over the counter orders
- Orders placed by phone
- Orders placed by salesperson
- Orders that have been placed on the Parts Store Website

<https://partsstore.scientificbrake.com/>

Questions?

Customer Service (Scientific Brake Staff)

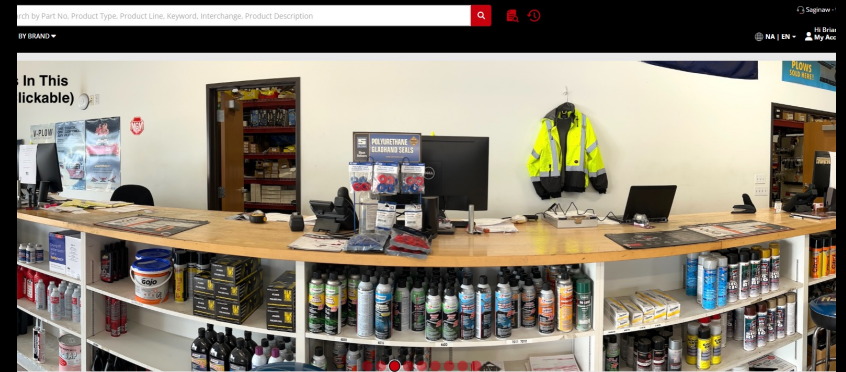
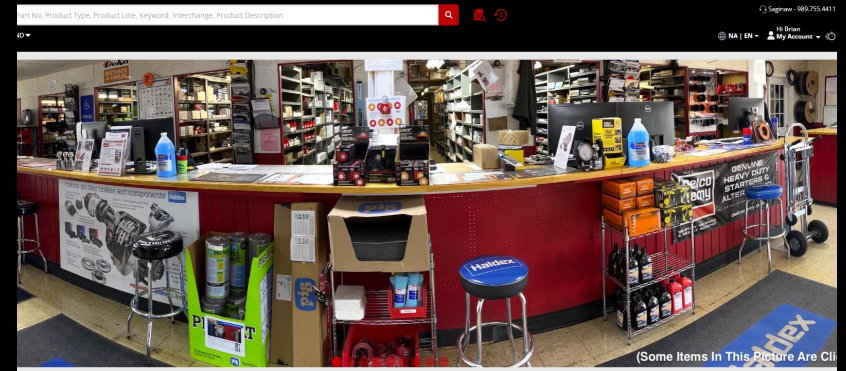
Email: CustomerService@scientificbrake.com

Phone: 989.755.4411

<https://partsstore.scientificbrake.com/>

Sign Up Now!

<https://scientificbrake.com/signup>



Scientific's Major Brands

