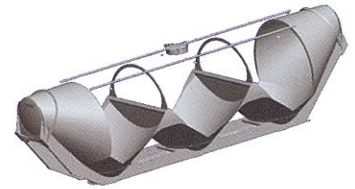




**J&L Tank**

*J&L Sander™*

Constructed specifically for oilfield and gas exploration, the J&L Sander™ is tough enough for virtually any application, yet lightweight enough to be efficient. Plus, the robust framing design and corrosion-resistant struts enhance trailer life on the job.



## Quality

**Design • Construction • Certification • Components • Craftsmanship**  
 The **QUALITY** assurance you are looking for.

- Internationally recognized ISO 9001:2000 quality system
- Lightweight, solidly constructed with only premium materials
- State-of-the-art welding technologies and advanced techniques

## Performance

**Service • Tare Weight • Unloading Rate • Temperature Rating • Pressure Rating**  
**PERFORMANCE** you can count on today, and tomorrow.

- Robust strut framing design
- Bi-metal end frames with galvanized steel long members and aluminum cross members
- Corrosion resistant pinned aluminum struts.

## Safety

**Manhole • Ladder • Walkway • Roll Stability • Accessibility**  
**SAFETY** features include:

- Open and accessible work areas
- Rigorous component testing
- Easy, simple-to-operate components

## Value

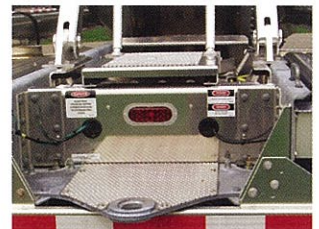
**Resale Value • Payload • Own/Operate Costs • Operational Support**  
**VALUE** today and tomorrow.

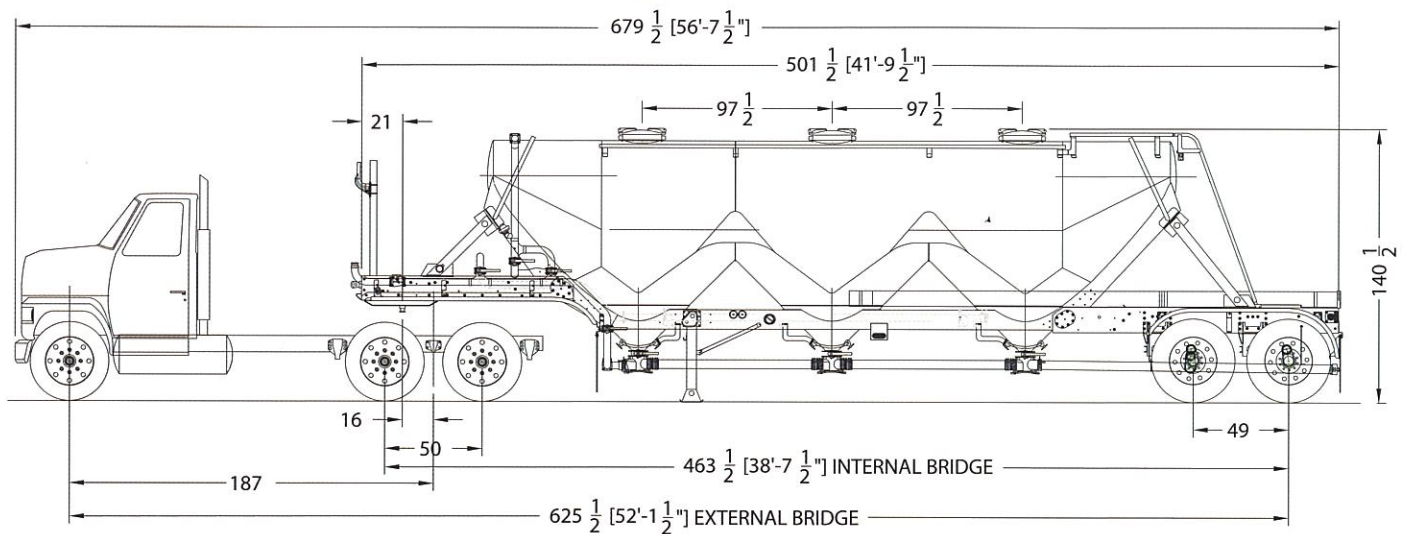
- Highest resale value in the industry
- Lowest O/O costs in the industry
- R&D staffed for continuous improvement

## Customer Support

**Warranty • Dealer Support • Technical Support • Product Literature • Training**  
**Unparalleled CUSTOMER SUPPORT.**

- Onsite, structured operator training programs
- Fully staffed, experienced technical support department
- Global dealer network supporting aftermarket sales and service





9,500	TRACTOR	7,000
2,500	TRAILER & PAYLOAD	27,000
12,000	TOTAL	34,000

WEIGHT SUMMARY	
TRAILER	9,600
TRACTOR	16,500
PAYLOAD	53,900
TOTAL GVW	80,000

RUNNING GEAR	3,827
TRAILER & PAYLOAD	30,173
TOTAL	34,000



A TOLERANCE OF 3% IS ALLOWED ON ALL WEIGHTS NOTICE: TANK WEIGHT INCLUDES ALUM. HUBS & CENTRIFUSE DRUMS, WITH 24.5 X 8.25 ALUM. DISC WHEELS & 11R24.5 XT-1 MICHELIN TIRES  
THIS DRAWING IS NOT TO SCALE AND IS NOT INTENDED TO SHOW EXACT LOCATION AND/OR QUANTITIES OF COMPONENTS

## Specifications

<b>Material</b> - Mill finished aluminum.
<b>Testing</b> - Hydro tested at 22.5 psi.
<b>Design Pressure</b> - 15 psi.
<b>Ladder</b> - Located at rear; handrails extending up and over rear end cone.
<b>Walkway</b> - Non-skid tape. Toe rails to extend past first manhole.
<b>Fenders</b> - Aluminum single contour front and double contour rear fenders. Heil anti-sail flaps.
<b>Lights</b> - 12 Volt Truck Lite flange mount LED lamp system complying to FMVSS with conspicuity markings each side and rear. Includes two work lights, one at rear of front fender and one high mounted at rear head. Single control switch mount in gauge box cabinet.
<b>Upper Coupler</b> - High-tensile steel, bolted and adjustable with 2" forged kingpin.
<b>Landing Legs</b> - JOST 2-speed with large sand shoes and streetside crank.
<b>Tow Hook</b> - Galvanized reinforced tow hook located between frame rails at rear of trailer.
<b>Gauges</b> - Two liquid filled, pressure range 0-30 psi located on streetside frame ahead of tandem in aluminum box with light.
<b>Product Valves</b> - 5" figure 500 butterfly valve, aluminum body, with cast iron disc and steel stem at each hopper operated roadside.

<b>Discharge Line</b> - Cast aluminum 5" tee at each hopper. 4 in. Schedule 40 aluminum pipe connected with rubber sleeves and clamp connectors between hoppers. Fitted with 4" weld-on aluminum adapter and cap. Line extends under axle to extreme rear.
<b>Pressure Control</b> - 3" figure 500 aluminum butterfly valve, located roadside to regulate airflow to product discharge line.
<b>Air Line</b> - 3" inlet at streetside equipped with welded aluminum adapter. 3" swing check valve at air inlet and upstream of front hopper.
<b>Top Air</b> - 3" aluminum line with 3" figure 500 aluminum butterfly valve. Located roadside front.
<b>Blow Down Line</b> - 3/4" aluminum line with 3" figure 500 aluminum butterfly valve and mechanical relief valve. Located roadside front. Discharge curbside behind front fender.
<b>Aeration</b> - One 3" aluminum butterfly valve at roadside controls airflow to aeration manifold on curbside. Line ends with aluminum threaded cap. Each hopper fitted with three Sure-Flo aerators with stainless steel wear plates.
<b>Hose Tube</b> - Two 8" x 21' aluminum tubes, one curbside and one streetside, mounted flush with rear of trailer.
<b>Suspension</b> - Hendrickson "R2R" Intraax AAT23-RC, parallel spindles and extended service brakes. 71.5" track, 5" round, 5/8" wall, 23,000 lb. axle beam rating, 49" spacing, with single leveling valve.
<b>Axles</b> - Integrated with air ride.
<b>Brakes</b> - Aluminum air reservoir, 16.5" x 7" (quick change) S-cam type brake shoes, Haldex Life Seal brake chambers, Haldex automatic slack adjusters, Haldex 4S-2M ABS with roll stability control.
<b>Hubs</b> - 10 Stud, "Hub Pilot" (single nut mount), aluminum hub for outboard drum (parallel spindle).
<b>Drums</b> - Centrifuse outboard mount brake drums (16.5" x 7").
<b>Oil Seals</b> - Preset bearing with OEM seals and visible-fluid type hubcaps.
<b>Paint</b> - Silver metallic Imron Series 5000 on steel parts.

