



J&L Tank

High Cube



When it comes to your payload, nothing is more important than purity and efficiency. Our all-aluminum tank keeps your product free from contamination, and a wide range of available capacities ensure that you get maximum performance from every run. Designed for ease of operation all models are backed with an unparalleled warranty and customer service.

Quality

Design • Construction • Certification • Components • Craftsmanship

Performance

Service • Tare Weight • Unloading Rate • Temperature Rating • Pressure Rating

Safety

Manhole • Ladder • Walkway • Roll Stability • Accessibility

Value

Resale Value • Payload • Own/Operate Costs • Operational Support

Customer Support

Warranty • Dealer Support • Technical Support • Product Literature • Training



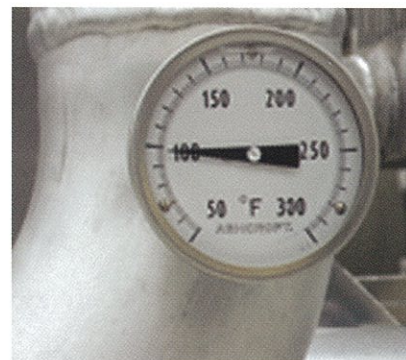
4"- Front Cleanout



Air-to-Air Cooler Option



Galvanized Suspension Frame Brackets



Optional Temperature Gauge

Applications

Options

Walkways	Expanded metal; side-mounted grip strut
Aeration	4-inch air inlet; individual hopper aeration controls
Silencers/Filters	Stainless steel and carbon steel mufflers; PneuClean and SureSeal inlet line cartridge filters
Product Tees	Gravity/bottom drop product tees in aluminum, carbon, and stainless steel
Product Valves	5-inch to 12-inch figure 340 nylon-coated disc; figure 500 iron and carbon steel disc
Fill/Load Lines	4-inch to 8-inch aluminum top-mounted and ground level
Ladders	Plain and knurled auxiliary grab handles

J&L High Cube

Models	1200	1350	1636	1636V	1830	1830V	2140	2140V	2600	2600V	560 Pull	560 Semi	*1575 4-Axle	*2600 4-Axle	*2600V 4-Axle
Length (in)	516	516	506	522	523	523	523	523	525	525	228	238	574	574	574
Height (in)	153	153	155	156	162	162	162	162	162	162	145	145	152	162	162
Est. Weight (lbs)	10100	10210	9900	10600	10600	12100	10750	12270	11590	12040	6450	4850	17900	19700	20040
Capacity (ft ³)	1190	1334	1585	1585	1834	1834	2140	2140	2525	2525	533	2040	1572	2525	2525
Hoppers	3	3	4	4	4	4	4	4	5	5	1	1	4	5	5
Design Pressure (PSI)	15	15	15	15	15	15	15	15	15	15	15	15	15	15	15

*Denotes Canadian export construction

Specifications

Material - Polished aluminum.

Testing - Hydro tested at 22.5 psi

Design Pressure - 15 psi in pressure mode. Vacuum trailers operate at 13" Hg in vacuum mode.

Ladder - Aluminum mounted at rear, over chassis frame. Grab handles at chassis frame and top of vessel.

Walkway - Non-skid tape between aluminum toe rails. Toe rails to extend past first manhole.

Fenders - J&L anti-sail flaps. Aluminum single contour front and double contour rear fenders.

Lights - 12 Volt Truck Lite flange mount LED lamp system complying to FMVSS with conspicuity markings each side and rear. Combination mid-tank clearance and turn signals, one each side with a third oval stop light, located rear center of trailer.

Upper Coupler - Hi-tensile steel, bolted and adjustable with 2" forged kingpin.

Landing Legs - Jost 2-speed Magnum series with sand shoes, and streetside crank.

Gauges - Pressure Tanks: Two, liquid filled, pressure range 0-30 psi in lighted cabinet. One for tank pressure, one for line pressure.

Product Valves - 5" figure 890 butterfly valve, two piece aluminum body, with one piece 255 duplex stainless disc and stem and white square shoulder seat. Located at each hopper operated roadside.

Product Lines - 4" Schedule-40 aluminum line between hoppers with aluminum snap-joint couplings.

Pressure Control - 3" figure 890 butterfly valve, two piece aluminum body, with one piece 255 duplex stainless disc and stem to regulate airflow to product discharge line.

Air Line - 3" aluminum line with 3" adapter and cap streetside front of tank. One 3" swing check valve near P.T.O. inlet and one 3" swing check valve upstream of front hopper discharge.

Top Air Line - 3" figure 890 butterfly valve, two piece aluminum body, with one piece 255 duplex stainless disc and stem in combination with blow-down line.

Blow Down Line - 3" aluminum line with 3" aluminum butterfly valve, aluminum body, 255 duplex stainless disc (1 piece disc and stem). Located roadside at front.

Hose Tube - 8" X 21' long aluminum hose tube located curbside rear of tank. Cast aluminum door at rear.

Suspension - Hendrickson raised center axle AA-230-RC Air Ride Suspension, parallel axle, and brake system. 71.5" track, 5" round, 23,000 lb. axle beam rating. 102" wide models equipped with 77.5" track axles.

Axles - Integrated with air ride.

Brakes - Aluminum 2850 in³ air tank with rubber saddles and stainless steel U-bolt mount. System to meet FMVSS requirements. Haldex 4S-2M TRS ABS system (4 sensor/2 modulator) with roll stability.

Oil Seals - Premium oil seals.

Bumper - D.O.T. compliance.

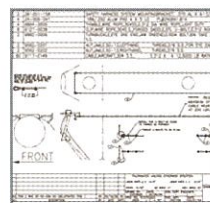
Paint - Silver metallic Imron Series 5000 on steel parts.



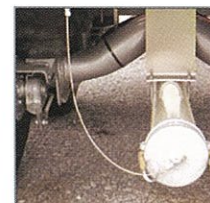
Industry leading operating parameters. Standard-setting unloading performance.



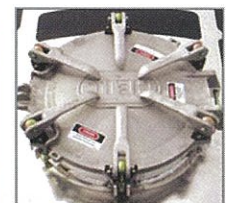
Robust design, craftsmanship and quality construction ensure product longevity.



A fully staffed technical service department is ready to support product with drawings and technical information.



Standard raised center axles allow for straight rear discharge, limiting pipe wear and reducing operating cost.



Comfortable to operate, nylon wear pads and long radius cams make for low resistance and years of easy operation.



SAGINAW • (989) 755-4411 • 1-800-292-0235
 GAYLORD • (989) 732-7507 • 1-800-292-3081
 ALPENA • (989) 379-2750 • 1-800-262-9353

info@scientificbrake.com • www.scientificbrake.com